

DIY Envelopes for Cards

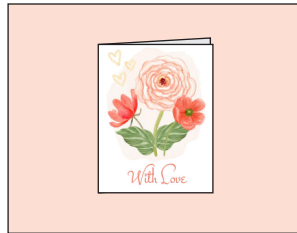
Supplies:

4.25" x 5.5" greeting card
8.5" x 11" piece of paper
Scissors
Glue stick



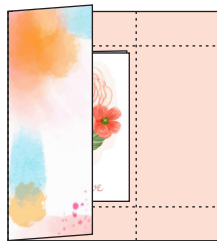
1

Turn the piece of paper upside down. Center the card on the paper.



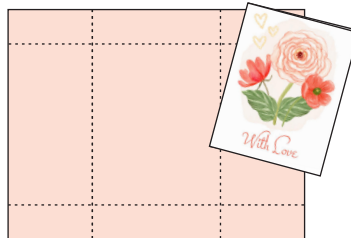
2

Fold each side over the card leaving about 1/4" around each side of the card.



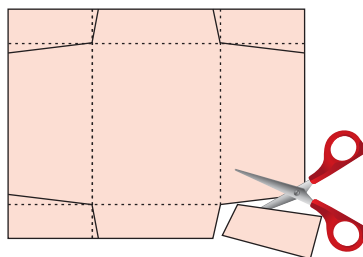
3

Open each side of the paper back out so it lays flat.



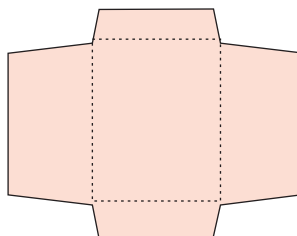
4

Using the diagram as a guide, snip out a corner as shown.



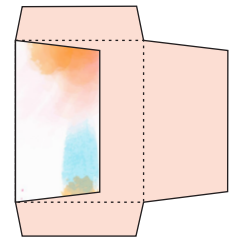
5

Repeat with other three corners.



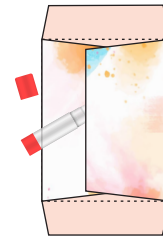
6

Fold in the left side at the crease.



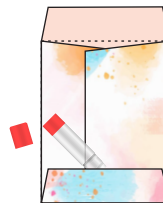
7

Fold in the right side at the crease. Use a glue stick to glue in place.



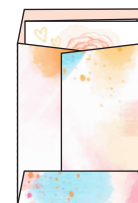
8

Fold up the bottom at the crease. Use a glue stick to glue in place.



9

Slide your greeting inside. Fold the top down and glue.



DIY to donate